

Showermate

Standard Twin Pumps

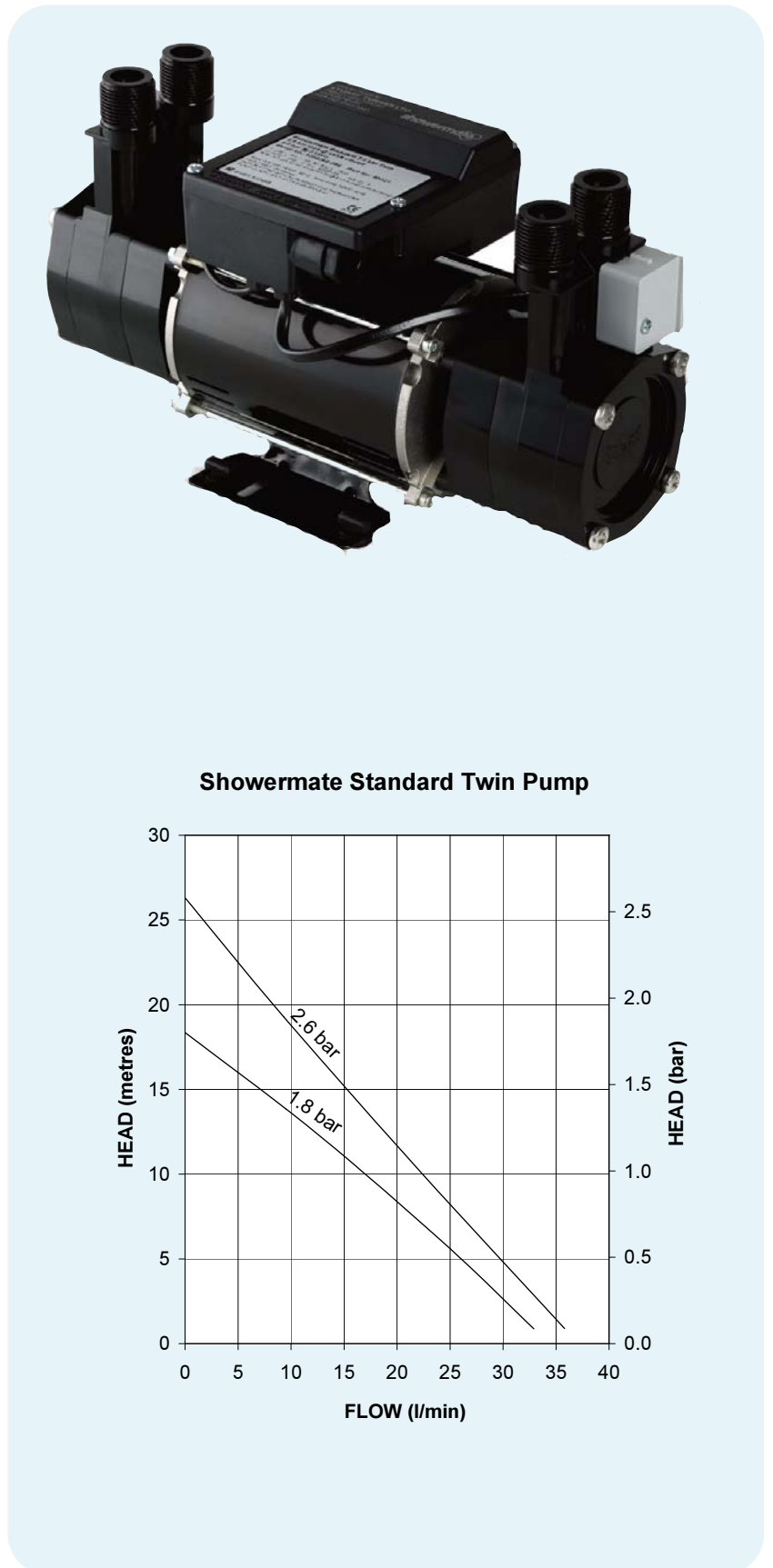
There's nothing more irritating than a tap or a shower that's no more than a trickle. Thankfully, the Showermate from Stuart Turner means it's a problem you need never worry about again. Not only will Showermate give your water pressure a much needed boost.

Requiring a flow of just 0.8 l/min to start they can be used for:

- Bath/basin mixer tap.
- Fixed plate or single function shower.
- Multi-function shower.
- 2 x single function showers.

Designed to suit any tank fed, open vented system, the Showermate offers the ultimate solution to poor performance. The Pumps:

- Are fully automatic.
- Are supplied complete with 15 mm flexible hoses.
- Offer more power and efficiency than ever before.
- Supplied pre-wired with 1.5 metre cable and anti-vibration feet.
- Reassurance of up to a 2-year guarantee (subject to conditions)



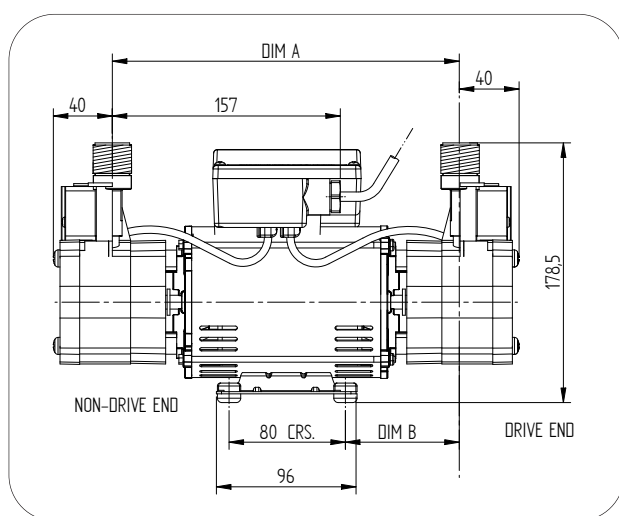
1

year guarantee!

subject to
conditions

Showermate Standard Twin Pumps

System Booster Pumps	1.8 bar Twin 46427	2.6 bar Twin 46431
Performance (bar) @ 9 l/min	1.5	1.9
Maximum Flow Litres Per Minute	33	36
Maximum Head Valve Closed (bar)	1.8	2.6
Maximum Inlet Static Head (Metres)	13	13
Hoses Flexible 15 mm Push-In	✓	✓
Pump Connection G $\frac{3}{4}$ "	✓	✓
Carbon Ceramic Mechanical Seal	✓	✓
Flow Switch Sensitivity approx. 0.8 l/min	✓	✓
Negative Airswitch Option Available	✓	✓
WRAS Approved 65°C max	✓	✓
Power Supply 230/1/50	✓	✓
Enclosure Rating BS EN 60529	IP22	IP22
Motor Type, Induction, Permanent Capacitor, Auto Resetting Protective Thermotrip	✓	✓
Power Consumption (Watts)	405	505
Full Load Amps	1.8	2.2
Fuse Rating Amps	5	5
Pre-Wired	✓	✓
Duty Rating Intermittent (S3) 30 mins on/ 30 mins off @ 9 l/min	✓	✓
Length mm	304	319
Width mm	132	132
Height mm without flexibles	178.5	178.5
Gross Weight Packed (kg)	4.9	5.8



Pump description	Dim. 'A'	Dim. 'B'
1.8 bar Twin	224 mm	71.4 mm
2.6 bar Twin	239 mm	78.8 mm



Stuart Turner Ltd
Henley-on-Thames
Oxfordshire RG9 2AD
England
Telephone: +44 (0)1491 572655
Fax: +44 (0)1491 573704

Email:
pumps@stuart-turner.co.uk
Web:
www.stuart-turner.co.uk

V.A.T. REG. No. 199 0987 92.
Registered in England No. 88368.
Registered Office:
Market Place, Henley-on-Thames